

# **Presentation 24 November 2010**

## **Area 2 Committee**

**BSF Programme**

**Ellis Guilford School**



# Ellis Guilford BSF Project

## some facts.....

- **approved by Executive Board 21 September 2010**
- **confirmed government grant: £11,991,000**
- **added City Council Wave 2 contribution: £800,000**
- **added capital contribution from school: £400,000**
- **total budget available: £13,191,000**



# Ellis Guilford BSF Project

## some facts.....

Investment in school buildings made over the years,  
..... resulting in a 'disjointed' school with  
..... very poor quality external spaces.

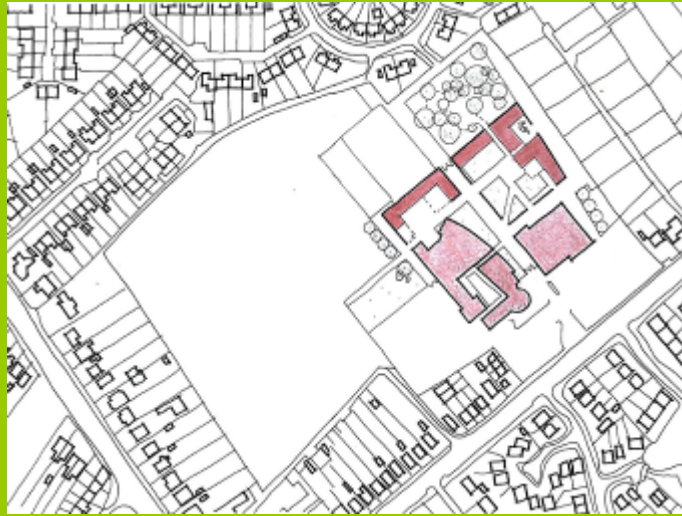
BSF gives the opportunity to complete the Ellis Guilford  
School 'estate' –

**INCLUDING** all outside spaces –

..... to ensure that all 1350 pupils can remain on site  
for the duration of the school day

**Reflect on Design Stage 0...**





**walled gardens**



**cloister courtyards**



**Stage 0 Masterplan options**

**Proposed Masterplan  
with available funding**

**Based on removal of temporary  
buildings and extensions to the  
existing Maths and English teaching  
blocks**



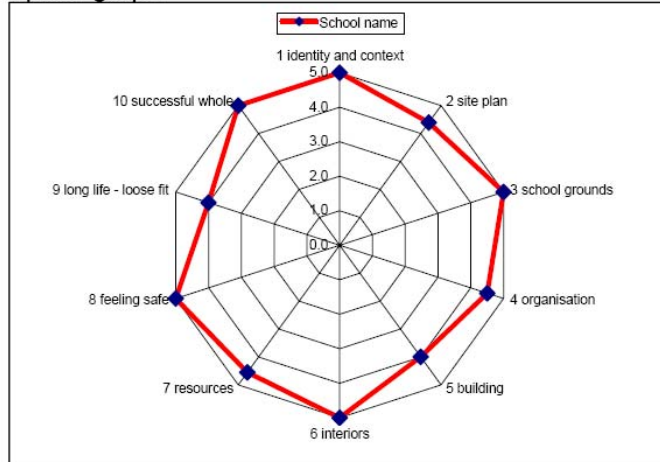
# Consultation with the School community

## SUMMARY Design Quality Assessment

total score out of possible 285 total	<b>259</b>
total average score out of possible 5	<b>4.6</b>
rating on spider graph:	<b>excellent</b>

School:		matrix rating	spider graph rating
grading of design	<b>excellent</b> very good pass unsatisfactory poor	229 - 285 172 - 228 115 - 171 58 - 114 0 - 57	5 4 3 2 0-1

### spider graph



1 identity and context	5.0
2 site plan	4.4
3 school grounds	5.0
4 organisation	4.5
5 building	4.0
6 interiors	5.0
7 resources	4.6
8 feeling safe	5.0
9 long life - loose fit	4.0
10 successful whole	5.0

Setting Minimum Design Standards

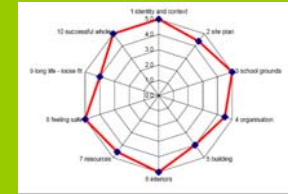


Nottingham  
City Council

# Design Stage 1 has achieved...

- **CONSULTATION** with School community  
Setting Minimum Design Standards

Ongoing review of Minimum Design Standards



- **DEVELOPING** the **school design brief**  
School Engagement Team (SET) meetings

- **ANALYSED** structure/services of existing buildings

- **ENSURED** design meets school's '**education vision**'

- **ENSURED** the design fits the BSF **budget**

.....



# Leading to proposals to .....

- **DEMOLISH** existing **Guilford** and **Maths** blocks
- **REMOVE** ALL **temporary buildings**
- **NEW BUILD** English, Maths, Humanities, drama, music, kitchen and dining and additional needs
- **ENHANCE external spaces** for recreation and enjoyment
- **IMPROVE** departmental adjacencies
- **DIFFERENT learning environments**
- **ENHANCE** existing buildings where funds allow

.....



- **ALL** external areas designed to a high standard
- **BUT no refurbishment or remodel work** to the existing science block and sports halls
- The existing multi-storey science block will have **electrical condition issues resolved**

**Ellis Guilford School**





# ICT proposals

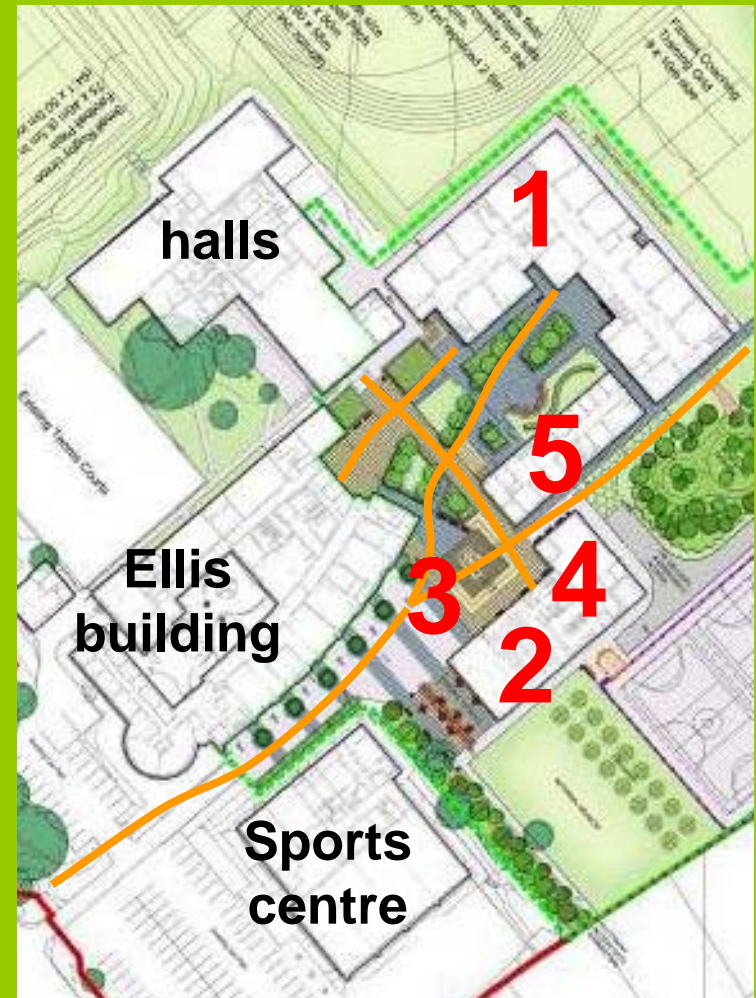
- An ICT vision has been developed with the school
- Area wide central '**learning platform**' to support educational developments across the whole site...
- This will enable pupil and staff access to '**Student Pathways for Learning**' and other educational functions that may be developed across the school

**Ellis Guilford School**



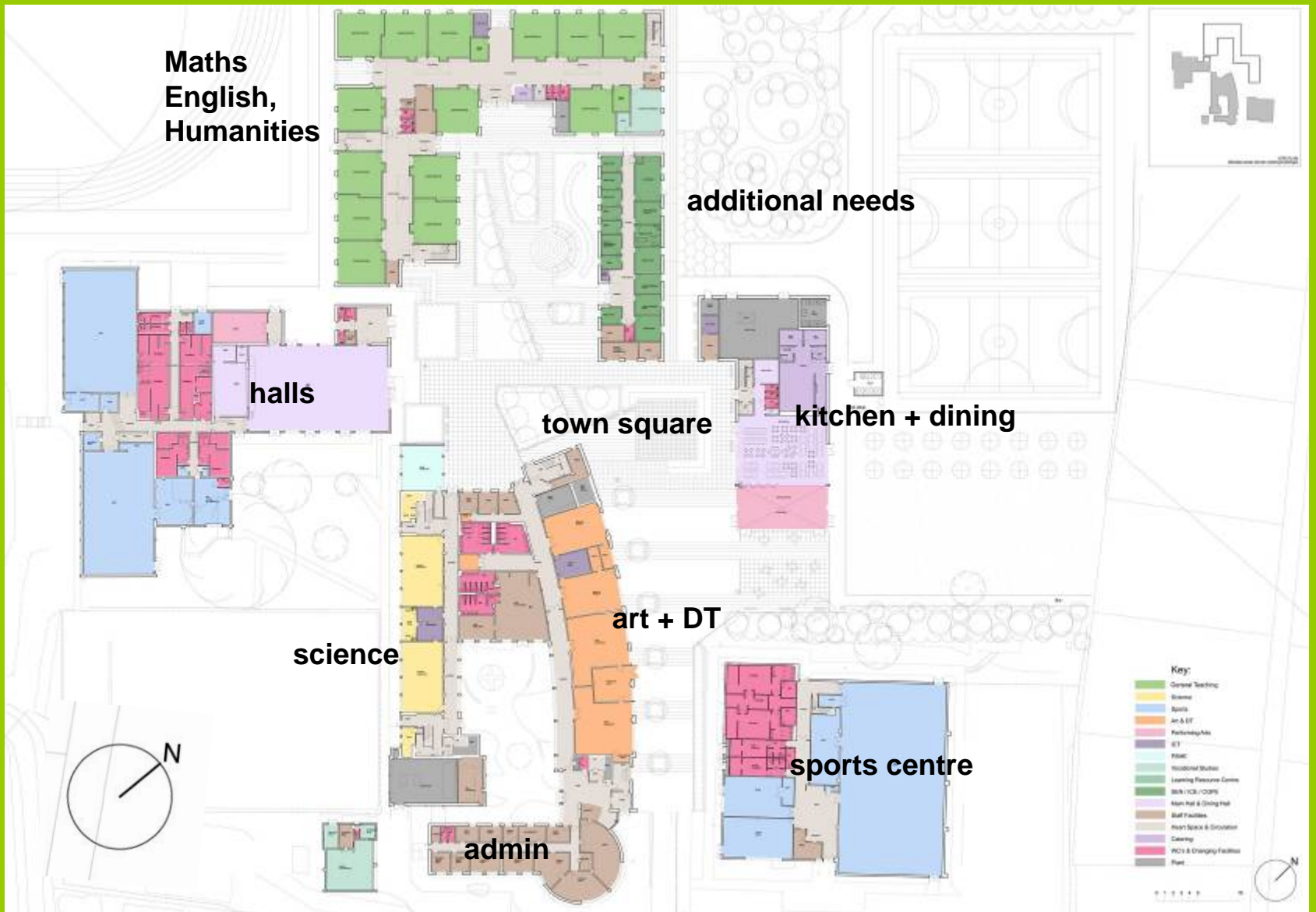
# Design Statement proposals

- 2 phase construction
  - minimal decant
- 1 NEW** 11 English, 10 Maths and 8 Humanities classrooms
- 2 NEW** dedicated dining Hall and kitchen
  - to improve catering facilities to encourage pupils to remain on site all day
- 3 NEW** 'town square' linking directly to dining hall
- 4 NEW** music and drama facilities
- 5 NEW** provision for additional needs





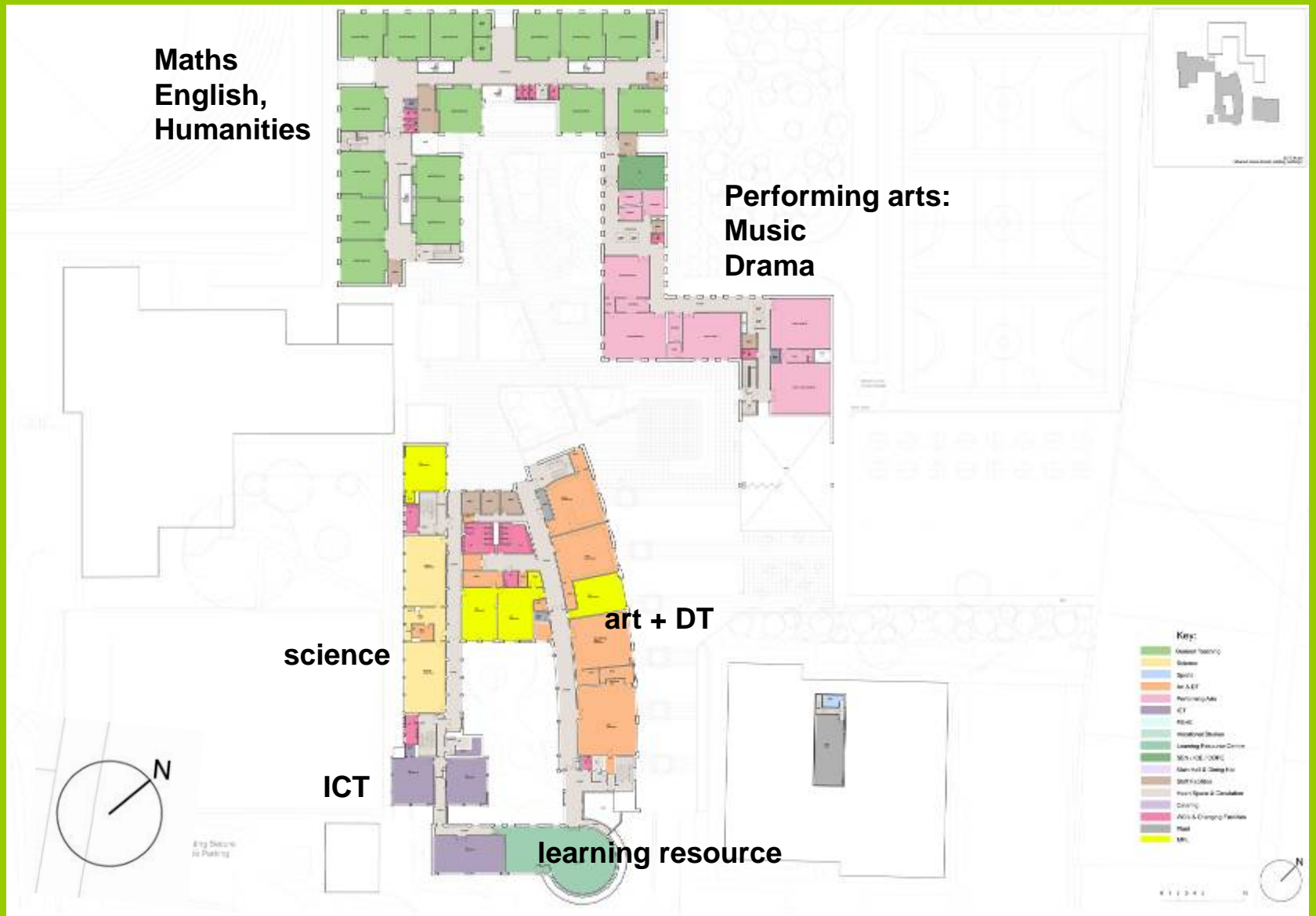




# Ellis Guilford School



**Nottingham  
City Council**



# Ellis Guilford School

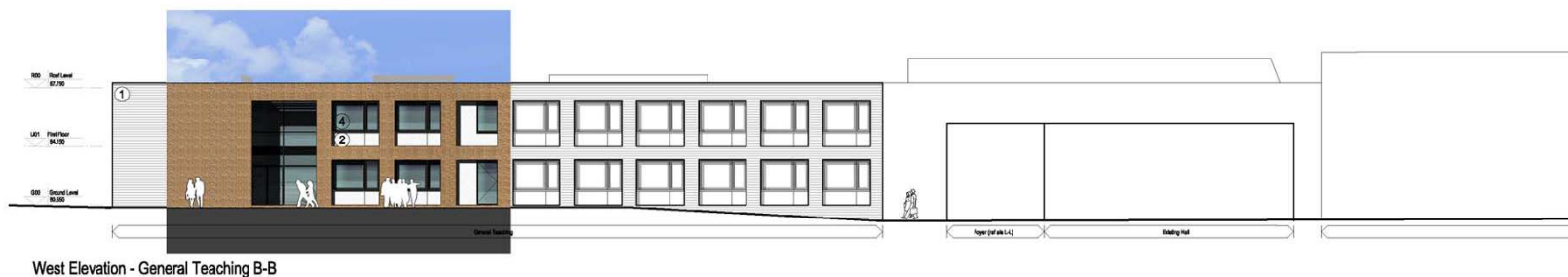


**Nottingham  
City Council**



North Elevation Kitchen, dining, music

Maths, English and Humanities building



West Elevation - General Teaching B-B

West Elevation Maths, English and Humanities building

# Ellis Guilford School



Nottingham  
City Council

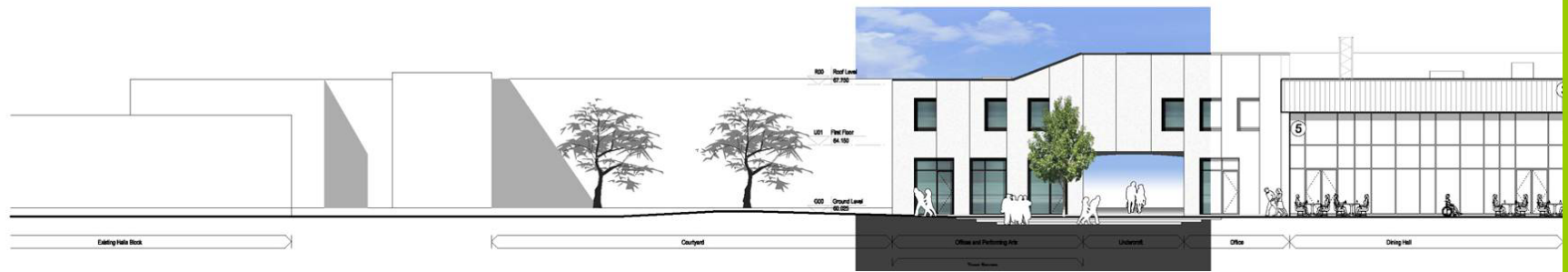


West Elevation

teaching

kitchen and dining

town square



South Elevation

town square

dining

# Ellis Guilford School



Nottingham  
City Council



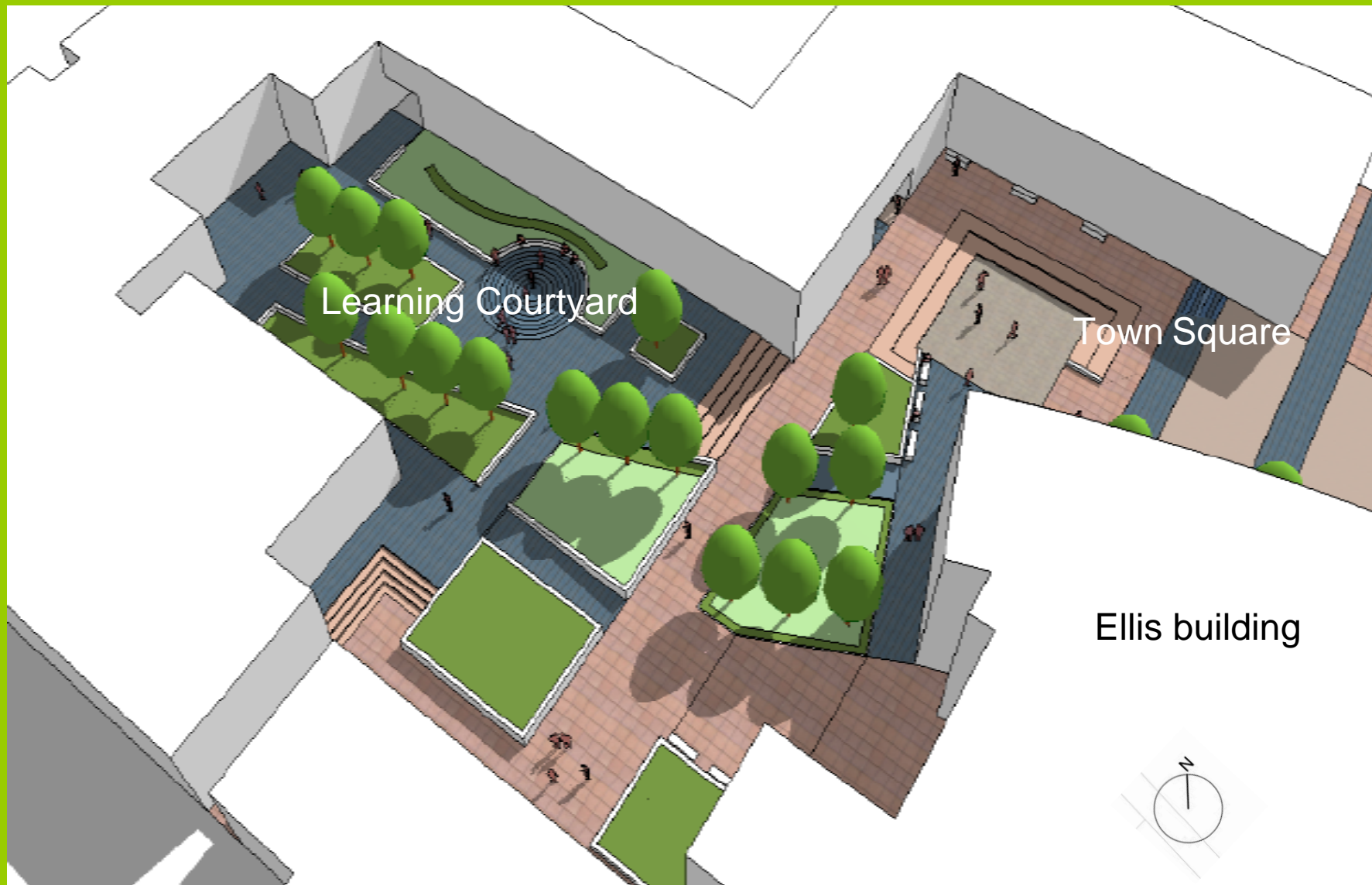


Typical elevation proposals

**Ellis Guilford School**







# Ellis Guilford School



Nottingham  
City Council



# Ellis Guilford School



Nottingham  
City Council

# Sustainability proposals

- sustainable and energy conscious design principles
- BREEAM 'very good' overall site
- BREEAM 'excellent' for new build elements
- natural ventilation and day-lighting
- maximise insulation to reduce heat loss, heat gain lower energy demand and carbon footprint
- renewable technologies eg. biomass boilers... solar thermal and photovoltaic panels... will be thoroughly assessed for cost/benefit



Nottingham  
City Council

# Next Stages:

## Stage 2 detail design

started September 2010

to be complete December 2010

- consultation with wider community
- submit **planning application** November 2010
- develop Stage 2 design into **construction drawings**
- **ensure detailed design matches BSF budget**



# Next Stages:

## Stage 3 construction design

starts December 2010

complete March 2011

- **MARCH 2011 reach financial close to confirm scheme is affordable**
- **contract signing**
- **prepare to enable start on site in APRIL 2011**
- **school buildings completion September 2012**
- **site works completion January 2013**